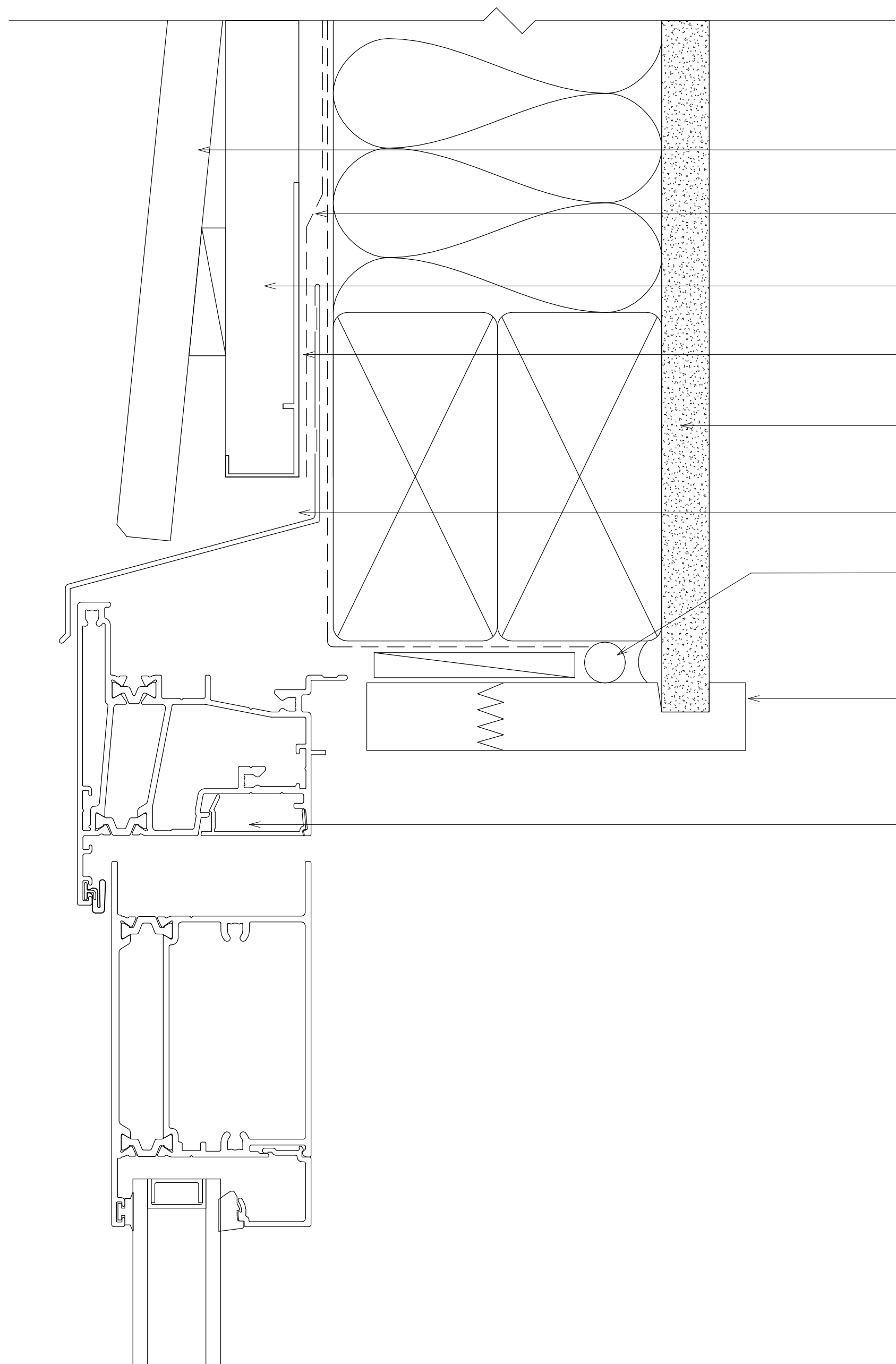
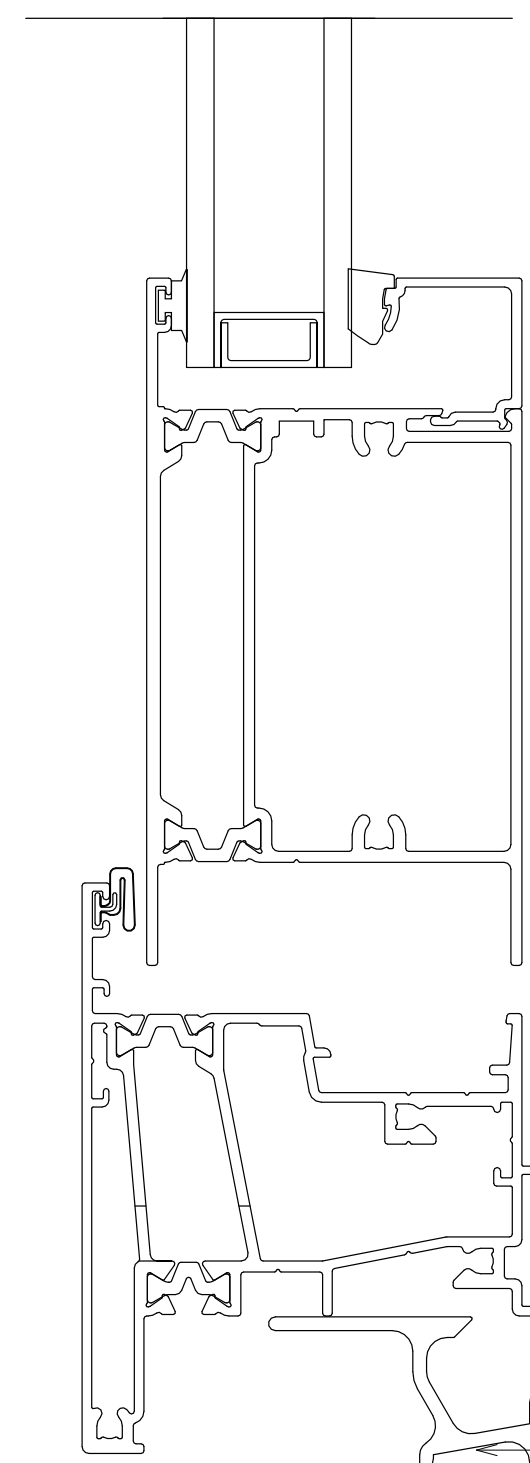


OPENING PREPARATION  
AS PER E2AS1



- WEATHERBOARD CLADDING
- FLASHING TAPE TO LAP HEAD FLASHING AS PER E2AS1
- CAVITY BATTEN
- CAVITY CLOSER
- INTERNAL LININGS
- EXTRUDED ALUMINIUM HEAD FLASHING
- PEF ROD AND AIR SEAL
- TIMBER LINER
- 809 OPEN IN DOOR



- PEF ROD AND AIR SEAL
- WANZ BAR TO SUIT

